



SML1.17

Name: **Cable lug with shear head bolts**

Al/Cu 10-95 mm², Ø13

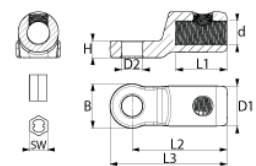
Type: SML1.17

GTIN: 6418677457555

Description: The cable lug is used for terminating conductors of cables up to 36 kV. Because of the shear head bolt construction, no crimping tools are needed. The required torque is achieved by tightening the bolt until it breaks off. The adapter needed in tightening is included in the package.

Photo presented is indicative only

The lug is longitudinally water tight. It is suitable for aluminium and copper conductors: solid and stranded, sector shaped and circular.



Package: 10/2520

Unit: PCS

Technical specification

Ratings

ETIM class Screw cable lug

Dimensions

Weight 0.065 kg

Conductor size Al/Cu 10-95

Drawing markings

B	28±1 mm
d	14±0,5 mm
D1	25±1 mm
D2	13±0.5 mm
H	10±1 mm
L1	32±2 mm
L2	59±2 mm
L3	73±2 mm
SW	17 mm

ETIM

Nominal cross section copper, RM	10 ... 95 mm ²
Nominal cross section copper, RE	10 ... 95 mm ²
Nominal cross section copper, SM	10 ... 95 mm ²
Nominal cross section aluminium, RM	10 ... 95 mm ²
Nominal cross section aluminium, RE	10 ... 95 mm ²
Nominal cross section aluminium, SM	10 ... 95 mm ²
Nominal cross section aluminium, SE	10 ... 95 mm ²
Material conductor	Aluminium/copper



SML1.17

Surface protection Tinned

Construction:	Component	Material
	Body	Tinned aluminium alloy
	Screws	Tinned aluminium
	Tin layer thickness	Lug body, > 10 µm Screw, > 3 µm
	Centering ring	Polypropylene
	Grease	RFL3
	Tool	Aluminium

Installation: Follow installation instructions in the connector package.

Tools required: SW17 wrench

Markings: ENSTO SML1.17X
Al/Cu 10-95mm²
WW/YYYY Class A

Standard: IEC61238-1