



SO276S

Name: **Tension clamp**
 4x(70-120) mm², shear head

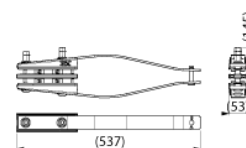
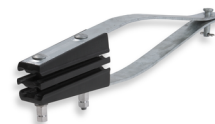
Type: SO276S

EAN: 6438100312008

Description: Tension clamp for the termination of 4 core overhead cables. The tension clamp is equipped with shear head nuts.

Package: 10

Unit: PCS



Technical specification

Electrical values

Test voltage 4 kV / 50 Hz / 1 min

Mechanical

SMFL 50 kN

Tightening torq.

Dimensions

Weight 2.355 kg

Conductor size 4x70-120

Cable diameter 12.7-17.6

Construction:	Component	Material
	Steel parts	Hot-dip galvanised steel
	Plastic parts	Fibreglass reinforced, frost, heat and UV-radiation resistant composite material
	Shear-head nuts	aluminium alloy
	Conical washers	Stainless steel

Installation: Open the clamp and insert conductors between the wedges. Springs keep the clamp in an open position during the installation. Nuts must be tightened up uniformly until proper torque is reached. After reaching a proper torque retightening is not allowed.

Tools required: Ratchet wrench CT164

Markings: ENSTO, SO276S, 70-120 mm²

Standard: EN 50483-2