



# SZ51

Name: **Pole fuse switch disconnector**  
 Al 2x(16-120) mm<sup>2</sup>, poles 3

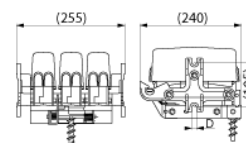
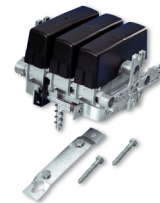
Type: SZ51

GTIN: 6418677406034

Description: The plastic covers separate different phases from each other, thus in-coming and out-going terminals are under same cover. Connectors included 6 x KG41, poles 3.

Package: 1/48

Unit: PCS



## Technical specification

### Electrical values

Rated values 160 A, 415 V

### Dimensions

Weight 4.185 kg

Conductor size Al 2x16-120

### Features

Connectors included 6xKG41

Number of poles 3

Utilization category AC22B

### Certificates

Standards EN 60947-3, IEC 60947-3

Use: For protecting stranded overhead cables and underground cables in LV-networks. Fuse-switch can be operated from the ground level by using operating rods.

Construction:	Component	Material
	Insulation parts	UV-radiation resistant fibreglass reinforced plastic
	Body	Corrosion resistant aluminium alloy
	Covers	Weather and UV-radiation resistant plastic
	Steel parts	Hot-dip galvanised or stainless steel
	Quenching chambers	3 pcs
	Al-connectors for 2x(16-120)mm <sup>2</sup> KG 41	6 pcs
	Deck screws PLE 13 (10x70mm)	2 pcs
	Fixing bracket PSS 288 with two screws M10 x 16	Distance between holes (mid to mid) 185 mm / hole Ø11mm



# SZ51

Installation:	The switch is attached to the pole with deck screws. This can be done from either end to make the chaining of units easier. Attachment to concrete and metal poles is done by band or screw fixing or by using brackets or racks.
Tools required:	Wrench and hammer. Tightening tool CT42 when steel band is used.
Markings:	Ensto SZ51, 415 V 50Hz AC22B, max. fuse solid link, gG 00 160A 250A 500V, 12W, IEC60947-3 / EN60947-3
Standard:	IEC 60947-3, EN60947-3