



Saves Your Energy

## PRODUCT CARD

18.10.2015

# C400-630

Name: **Shear head bolt cable lug**  
Al 400-630 mm<sup>2</sup> Cu 400-500 mm<sup>2</sup>, Ø13

Type: C400-630

GTIN: 6418677447457

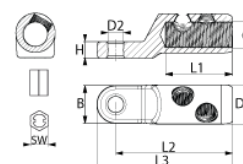


Photo presented is indicative only

Description: The cable lug is used for terminating conductors of cables up to 36 kV. Because of the shear head bolt construction, no crimping tools are needed. The required torque is achieved by tightening the bolt until it breaks off.

The lug is water tight. It is suitable for aluminium and copper conductors: solid and stranded, sector shaped and circular.

Package:  
Unit: PCS



## Technical specification

### Ratings

ETIM class Screw cable lug

### Dimensions

Weight 0.550 kg  
Conductor size Al 400-630 / Cu 400-500

### Drawing markings

B	53 mm
d	34 mm
D1	52 mm
D2	13 mm
H	16 mm
L1	94 mm
L2	132 mm
L3	157 mm

### ETIM

Nominal cross section copper, RM	400 ... 500 mm <sup>2</sup>
Nominal cross section aluminium, RM	400 ... 630 mm <sup>2</sup>
Material conductor	Aluminium/copper
Surface protection	Tinned
With shear-off head	x

Ensto Finland Oy

Ensio Miettisen katu 2  
P.O.Box 77  
06101 Porvoo, Finland

Tel. +358 204 76 21  
Fax +358 204 76 2770

www.ensto.com