



SML1.17

Name: **Cable lug with shear head bolts**

Al/Cu 10-95 mm², Ø13

Type: SML1.17

GTIN: 6418677457555

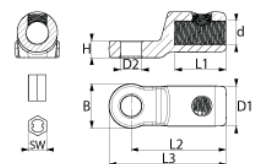
Description: The cable lug is used for terminating conductors of cables up to 36 kV. Because of the shear head bolt construction, no crimping tools are needed. The required torque is achieved by tightening the bolt until it breaks off. The adapter needed in tightening is included in the package.

Photo presented is indicative only

The lug is longitudinally water tight. It is suitable for aluminium and copper conductors: solid and stranded, sector shaped and circular.

Package: 10/2520

Unit: PCS



Technical specification

Ratings

ETIM class Screw cable lug

Dimensions

Weight 0.065 kg

Conductor size Al/Cu 10-95

Drawing markings

B	28±1 mm
d	14±0,5 mm
D1	25±1 mm
D2	13±0.5 mm
H	10±1 mm
L1	32±2 mm
L2	59±2 mm
L3	73±2 mm
SW	17 mm

ETIM

Nominal cross section copper, RM	10 ... 95 mm ²
Nominal cross section copper, RE	10 ... 95 mm ²
Nominal cross section copper, SM	10 ... 95 mm ²
Nominal cross section aluminium, RM	10 ... 95 mm ²
Nominal cross section aluminium, RE	10 ... 95 mm ²
Nominal cross section aluminium, SM	10 ... 95 mm ²
Nominal cross section aluminium, SE	10 ... 95 mm ²
Material conductor	Aluminium/copper



Saves Your Energy

PRODUCT CARD

18.10.2015

2/2

SML1.17

Surface protection

Tinned

Ensto Finland Oy

Ensio Miettisen katu 2
P.O.Box 77
06101 Porvoo, Finland

Tel. +358 204 76 21
Fax +358 204 76 2770

www.ensto.com