



SML2.27

Name: **Cable lug with shear head bolts**

Al/Cu 70-240mm², Ø13

Type: SML2.27

GTIN: 6418677457562

Description: The cable lug is used for terminating conductors of cables up to 36 kV. Because of the shear head bolt construction, no crimping tools are needed. The required torque is achieved by tightening the bolt until it breaks off. The adapter needed in tightening is included in the package.

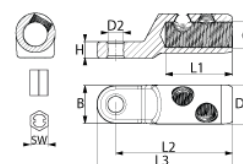
The lug is longitudinally water tight. It is suitable for aluminium and copper conductors: solid and stranded, sector shaped and circular.

Package: 10/1050

Unit: PCS



Photo presented is indicative only



Technical specification

Ratings

ETIM class Screw cable lug

Dimensions

Weight 0.167 kg

Conductor size Al/Cu 70-240

Drawing markings

B	32±1 mm
d	20,5±0,5 mm
D1	33±1 mm
D2	13±0.5 mm
H	14±1 mm
L1	57±2 mm
L2	98±2 mm
L3	114±2 mm
SW	24 mm

ETIM

Nominal cross section copper, RM	70 ... 240 mm ²
Nominal cross section copper, RE	70 ... 240 mm ²
Nominal cross section copper, SM	70 ... 240 mm ²
Nominal cross section aluminium, RM	70 ... 240 mm ²
Nominal cross section aluminium, RE	70 ... 240 mm ²
Nominal cross section aluminium, SM	70 ... 240 mm ²
Nominal cross section aluminium, SE	70 ... 240 mm ²
Material conductor	Aluminium/copper



Saves Your Energy

PRODUCT CARD

18.10.2015

2/2

SML2.27

Surface protection
With shear-off head

Tinned
x

Ensto Finland Oy

Ensio Miettisen katu 2
P.O.Box 77
06101 Porvoo, Finland

Tel. +358 204 76 21
Fax +358 204 76 2770

www.ensto.com